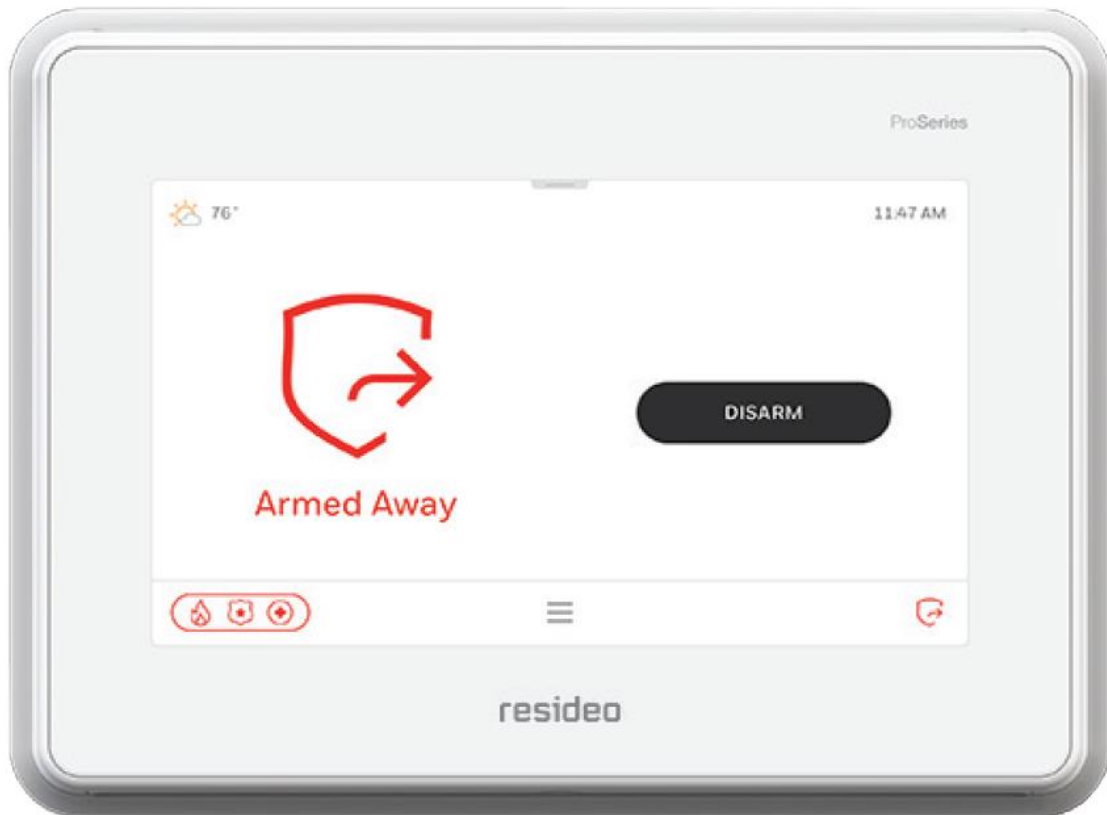


Quick Install Guide

Do-It-Yourself Package (PROA7)



Need help installing your kit?

If at any point during your installation you need some help, just give our Technical Support team a call during regular business hours, at 1-833-427-3233, option 3.

How to complete the activation

The last step in activating your kit is for you to call our Technical Support team at 1-833-427-3233, option 3. They'll walk you through the free Total Connect 2.0 web application and perform testing to ensure that our monitoring station is receiving alarm signals from your panel.

INSTALLATION INSTRUCTIONS

1. **CONTROL PANEL (PROA7)** – See PDF “Honeywell Resideo_PROA7DM-Installation-Instructions_EN_FR”
2. **DOOR/WINDOW CONTACTS (PROSiXCT)** – See PDF “Honeywell Resideo_PROSiXCT-Installation-Instructions”
3. **MOTION DETECTOR (PROSiXPIR)** – See PDF “Honeywell Resideo_PROSiXPIR-Installation-Instructions”